



Lambert Road, Brixton, SW2

2 bedroom flat - purpose built to let

£484 Per Week

Part furnished

Property Details

Keating Estates are proud to present to market a wonderful two double bedroom apartment with a full-width step-out balcony and a private entrance, set over the top floor of a purpose built development on Lambert Road, with local amenities on the doorstep.

The heart of the home is the spacious open-plan reception room, illuminated by floor-to-ceiling South-facing windows and sliding doors that open onto a generous step out balcony. This room exudes a contemporary feel, complete with engineered wooden flooring and modern downlighting. A sleek white gloss kitchen is set to the rear of the room, its integrated design and high-gloss surfaces maximising the light and space on offer. The thoughtful addition of a breakfast bar not only provides further worktop and storage space but also enhances the sociable flow of the room, ideal for entertaining or relaxed everyday living.

The principal bedroom echoes the same bright, airy charm as the living area, featuring floor to ceiling windows with direct access to the balcony, perfect for morning coffee or stargazing. This peaceful retreat offers fitted wardrobes and ample space to accommodate a dressing table or desk, while plush carpeting adds a touch of warmth underfoot. The second bedroom, quietly situated to the rear of the property, is also a genuine double with built-in wardrobes - a versatile space suitable for guests, a home office or sharers alike. The bathroom is tastefully finished in neutral

Features

- Two double bedrooms
- Full width step-out balcony
- Purpose built development
- Own front door
- Bright, predominately South-facing aspect
- Central Brixton a ten-minute stroll
- Brockwell Park nearby
- Clapham and Abbeville Village a twenty-minute walk
- Victoria and Northern lines

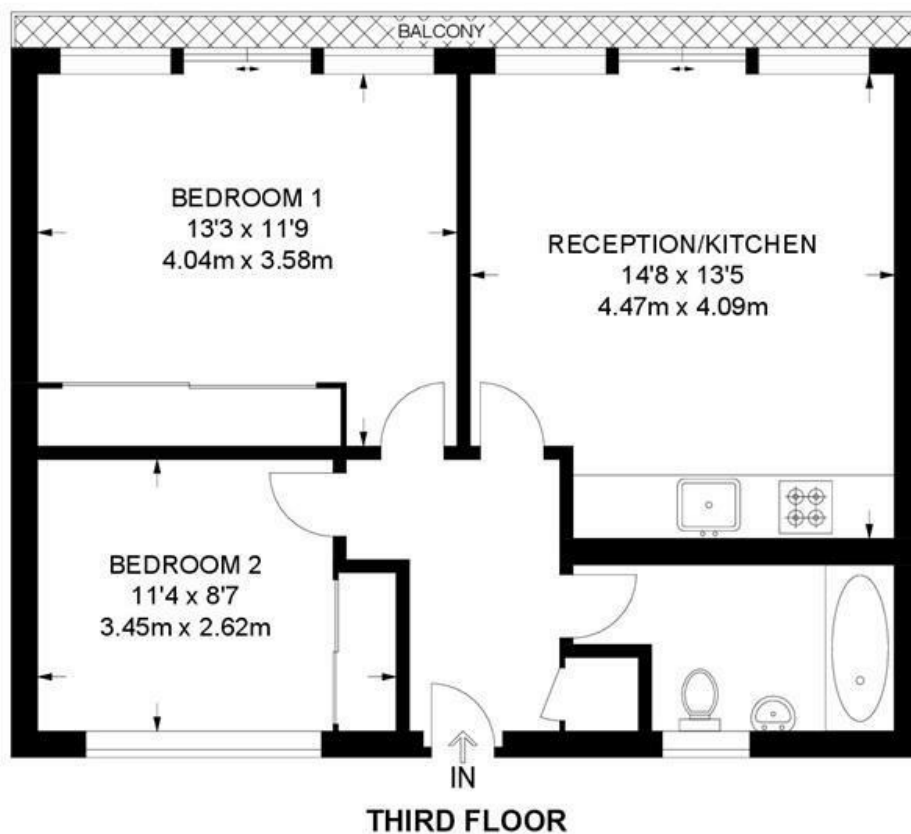
Council tax band D EPC rating C (79)



Lambert Road, Brixton, SW2

Lambert Road, SW2 2 Bedroom Flat

APPROXIMATE GROSS INTERNAL AREA: **562 SQ FT / 52.2 SQ M**



While we try our very best, floor plans are produced as a guide only and we take no responsibility for the precise accuracy with which any property is represented.

Lambert Road, Brixton, SW2

